

Landslide

Robust and powerful.

A moment frozen in bronze. This work balances on the cutting edge of control and surrender. Organic forms flow together in a dynamic interplay of lines — colliding streams of metal. An almost volcanic energy is still palpable on the surface. The skin of the bronze is alive: from warm gold nuances to deep green tones of the patina. No fixed formal language. No repetition. Only material that speaks — in its own language.

My inspiration

Landslide originated from research — not just into form, but specifically into behavior. What happens when bronze becomes liquid? How does it move, where does it break, how does it come to a standstill? Fluidity, oxidation, temperature, and time interlock within a process that can never be fully controlled. It is precisely there that space is created. Not only to form, but to react. The final work is not a preconceived endpoint, but the result of a continuous dialogue with the material.

Techniques

The bronze was cast directly into sand outside the studio. No mold. No intermediate stage: just the moment of casting.

Two movements. Two fragments. Brought together into a single whole: *Landslide*.

After cooling, the work was carefully detached from the substrate and worked on layer by layer. Brushed where necessary, patinated where the surface called for it.

Structure and direction become visible: not imposed, but revealed.

Finally, the work was framed, allowing it to balance between plane and space, between 2D and 3D.

Connected in Oeuvre

Where the focus previously lay on form via wax sculptures — built up, controlled, and translated into bronze — *Landslide* marks a clear shift. Here, form and color emerge directly within the casting process itself.

The work represents a new approach: less steering, more allowing.

A next step in understanding the material — and in engaging in an increasingly direct interaction with it.

Facts

Year: 2026

Dimensions: 27.5 x 22 cm (including frame)

Weight: 1500 grams (including frame)

Package: box

Note: Delivery in Amsterdam will be done by the artist himself. All other destinations will be done by an external transporter.

Packaging and delivery will take longer

Want to know more?

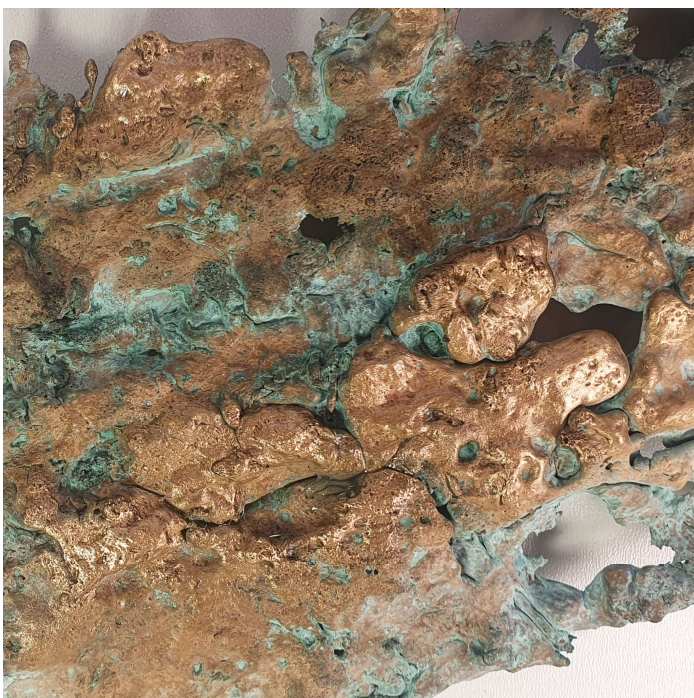
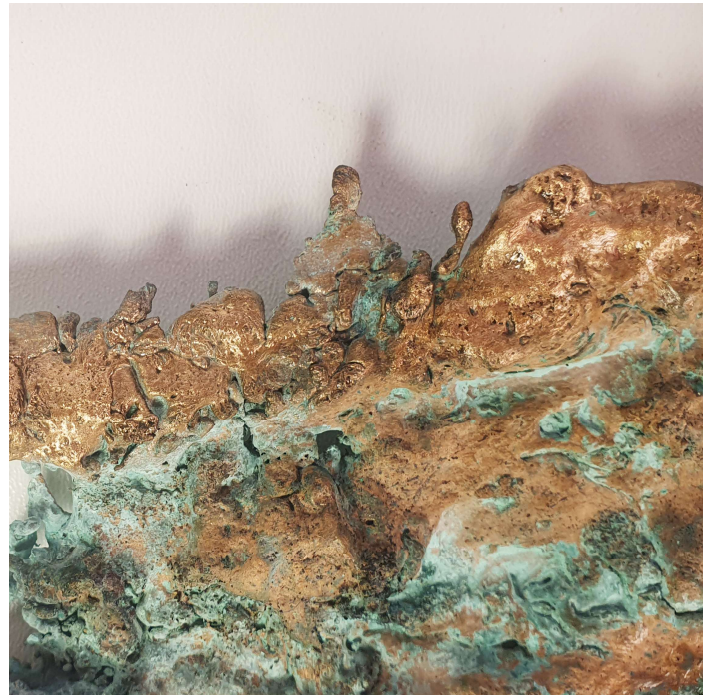
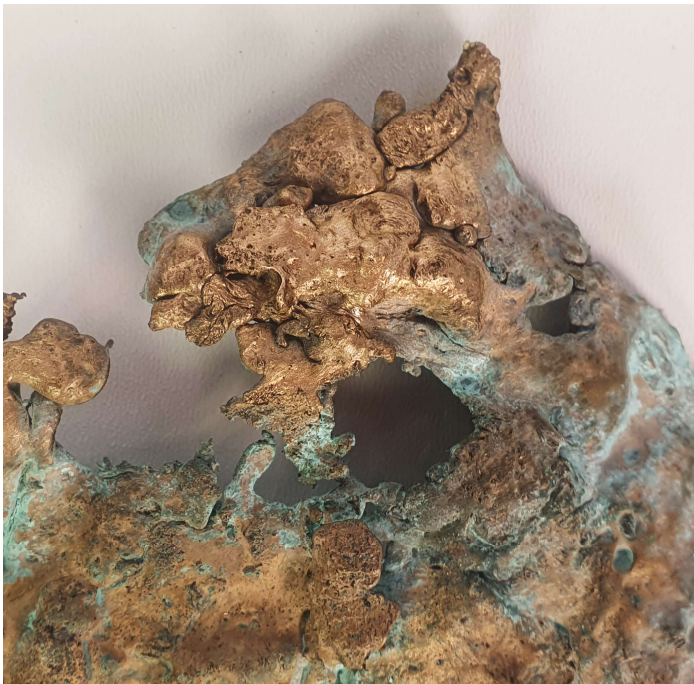
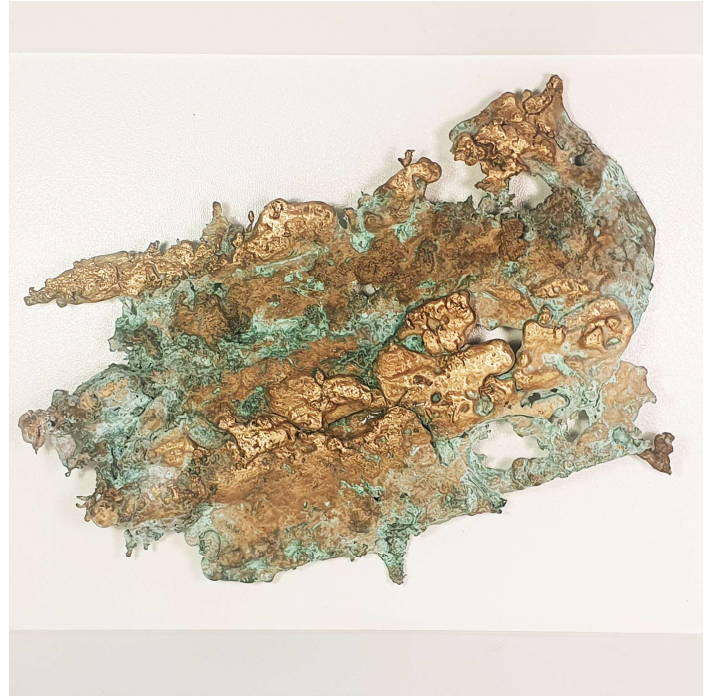
Please do not hesitate to contact me: wichert@frozensteel.nl / +316 152 915 33

Or visit me (Tuesday, Thursday or Friday) at my workshop:

Openbare Werkplaats

Cruquiusweg 78

1019 AJ Amsterdam



Wichet
FrozenSteel.nl